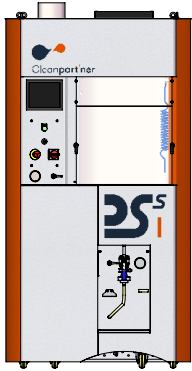


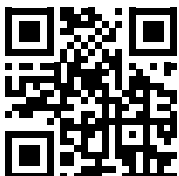
## DSS1 series



The DSS1 is the smallest of the Cleanpart'ner particle tracker extraction stations. It allows the extraction of contamination on very small components to assess their level of cleanliness in accordance with current standards such as ISO 16232 and VDA19, among others.

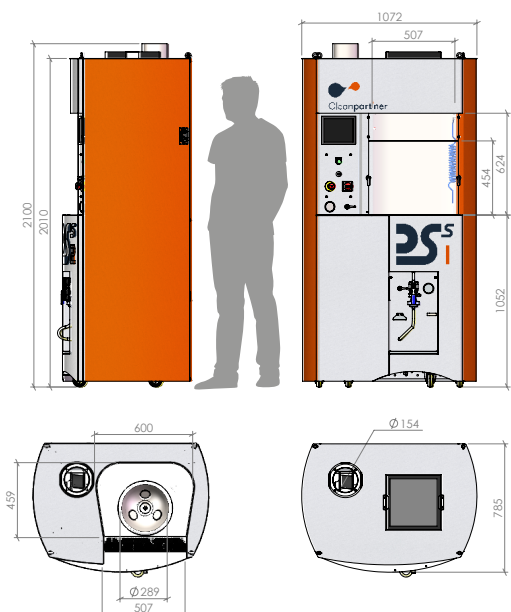
### Benefits

- Extraction bowl Ø 290 mm
- Quick installation, passing through a standard access door
- Fast and repeatable blank acquisition, value less than 50 µm
- Ultrasonics integrated to the bowl, adjustable 150 w power (optional)
- Full access to the extraction area (optional sliding window)
- Double air supply flow and exhaust air extraction, integrated into the station (operator protection)
- Laminar air flow with HEPA filter 0,3 µm meet a class 5 max. following ISO 14644
- Touch colour machine interface with functional and intuitive controls
- Designed and manufactured in our workshops
- Quality of finishes and choice of materials to avoid particle generation and retention
- Proven and reliable equipment



### Dimensions

	Width (mm)	Depth (mm)	Height (mm)
Working area	Bowl Ø 290	/	145
Overall	1072	785	2100



## Technical informations

EC fully compliant - Comply with the European Machinery Directives 2006 and Electromagnetic compatibility

Two types of PLC available as standard: PRO-FACE or SIEMENS

Pen flow rate: adjustable 5 L/mn max.

Rinsing pressure: 4,5 bar max.

Useful volume tank: 40 litres

Membrane holder: Ø 47 mm - optional cascade of 3 membranes

Fluid filtration rate: 0,2 µm

Accepted types of fluid: solvent or detergent (water base)

Materials: 304L stainless-steel polished bowl - Painted steel for the frame

Fine textured powder paint

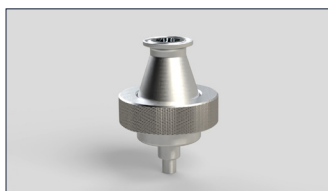
Extraction connection: 154 mm outside

Power consumption : 1500W max.

## Accessories



Solvent pen with different Ø



Simple Membrane holder



Cascade membrane holder Ø47



Plastic sieve strainer

## Choose your configuration

	HMI	Finishes	Window	Option Ultrasound	Power supply
<b>DSS1</b>	<input type="checkbox"/> P Pro-Face 7" <input type="checkbox"/> S Siemens 7"	<input type="checkbox"/> 2P Painted frame <input type="checkbox"/> 2S Full stainless-steel	<input type="checkbox"/> R Removable <input type="checkbox"/> G Sliding door	<input type="checkbox"/> Without ultrasound <input type="checkbox"/> US150 150W Ultrasound	<input type="checkbox"/> A 110V - 60Hz <input type="checkbox"/> B 220V - 60Hz



Cleanpart'ner and its particle trackers specifically meet your needs and the geometry of your parts which require an adapted response.