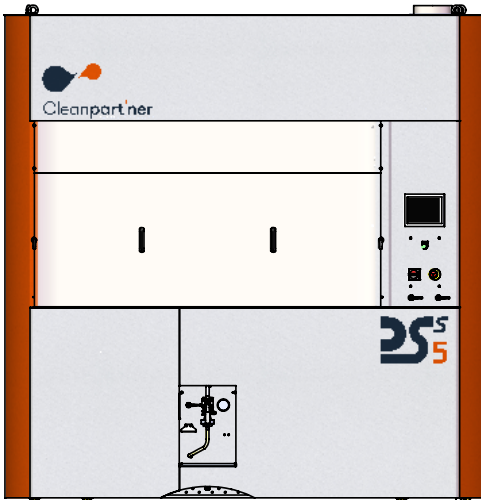


DSS5 series

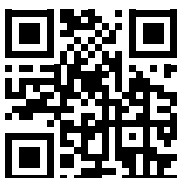


Super polished mirror enclosure the most sophisticated on the market

DSS5 is the extraction station for Cleanpart'ner particle trackers for very large components. It allows to extract the contamination in order to evaluate the level of cleanliness of the parts according to the cleanliness standard which are, among others, the ISO 16232 and the VDA19 .

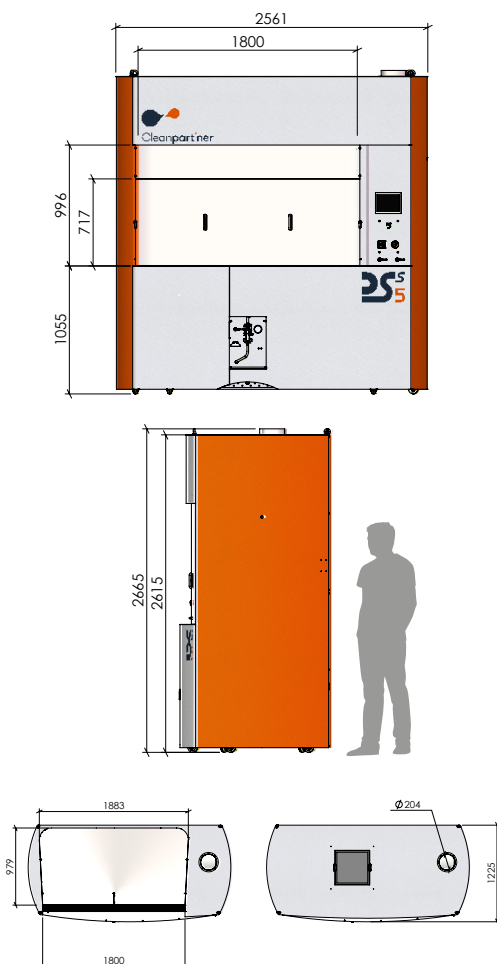
Benefits

- Ovoid extraction enclosure to minimize particle retention, super polished mirror finish, Ra 0.02
- Fast and repeatable blank acquisition, value less than 250 μm , 200 μm as a minimum
- Automatic Wall flushing integrated into walls without risk of particles retention
- Full access to the extraction area (optional sliding window)
- Double air supply flow and exhaust air extraction, integrated into the station (operator protection)
- Laminar air flow with HEPA filter 0,3 μm meet a class 5 max. according to ISO 14644
- Touch colour machine interface with functional and intuitive controls
- Designed and manufactured in our workshops
- Quality of finishes and choice of materials to avoid particle generation and retention
- HMI located on the right side to allow the installation of a manipulator arm for heavy components (optional)
- Proven and reliable equipment



Dimensions

	Width (mm)	Depth (mm)	Height (mm)
Working area	1800 / 1883 max.	979	1095 + 206
Overall	2561	1225	2665



Technical informations

EC fully compliant - Comply with the European Machinery Directives 2006 and Electromagnetic compatibility

Two types of PLC available as standard: PRO-FACE or SIEMENS

Pen flow rate: adjustable 5 L/mn max. - Walls flushing: 15 L/mn max.

Rinsing pressure: 4,5 bar max.

Useful volume tank: 70 litres

Membrane holder: Ø 47 or 90 mm - Optional cascade of 3 membranes

Fluid filtration rate: 0,2 µm

Accepted types of fluid: solvent or detergent (water base)

Materials: 304L stainless-steel polished bowl - Painted steel for structure

Fine textured powder paint

Extraction connection: 204 mm outside

Power consumption: 2100W max.

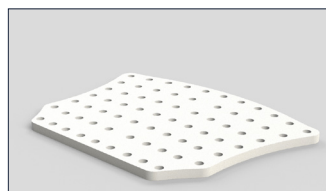
Accessories



Stainless-steel shower



Cascade membrane holder
Ø47 or 90 mm



HDPE support plate



Solvent pen with interchangeable
nozzles

Choose your configuration

	HMI	Finishes	Window	Power supply
DSS5	<input type="checkbox"/> P Pro-Face 7" <input type="checkbox"/> S Siemens 7"	<input type="checkbox"/> 2P Painted frame <input type="checkbox"/> 2S Full stainless-steel	<input type="checkbox"/> R Removable <input type="checkbox"/> G Sliding door	<input type="checkbox"/> A 110V - 60Hz <input type="checkbox"/> B 220V - 60Hz



Cleanpart'ner and its particle trackers specifically meet your needs and the geometry of your parts which require an adapted response.