



RB SERIES

Shotblasting systems

STEEL CONSTRUCTION

ANGLES & FLATS
BEAMS & PIPES
PLATES
SURFACE TREATMENT
ROBOTIC WELDING
SOFTWARE & AUTOMATION





RB G SERIES

Roller conveyors are predominantly used to clean metal plates and profiles in a continuous through feed process. FICEP offers a variety of roller conveyors for different uses and work speeds.

The RB G range is mainly designed for the treatment of metal plates or profiles in the steel construction or steel preparation industries. The machines can be delivered as stand-alone units or integrated into an automatic material handling system for sawing or drilling.

The RB G range is offered with through feed widths from 600mm to 3000mm. The blasting wheels are positioned perpendicular to the flow direction of the roller conveyor. The RB 1500 is fitted with 4 shot blast wheels. The RB 2000 can be provided with either 4 or 6 wheels. The larger systems such as the RB 2500 and RB 3000, can be supplied with either 6 or 8 shot blast wheels. The 6-wheel version is used for treating plates or smaller profiles, whereas the 8-wheel version is mainly recommended for blasting profiles.



Characteristics for RB G

- 01 Light barrier
- 02 Shot blast wheel
- 03 Abrasive control unit
- 04 Abrasive silo
- 05 Abrasive reclaimer
- 06 Impact separator
- 07 Bucket elevator
- 08 Fan for Air-Shoc Filter
- 09 Pre-separator
- 10 Safety filter
- 11 Dust bag
- 12 Abrasive removal unit





Characteristics for RB HD

- 01 Light barrier
- 02 Turbine wheel
- 03 Abrasive control unit
- 04 Abrasive silo
- 05 Abrasive reclaiming
- 06 Impact separator
- 07 Bucket elevator
- 08 Fan for Air-Shoc Filter
- 09 Pre-separator
- 10 Safety filter
- 11 Dust bag
- 12 Abrasive removal unit

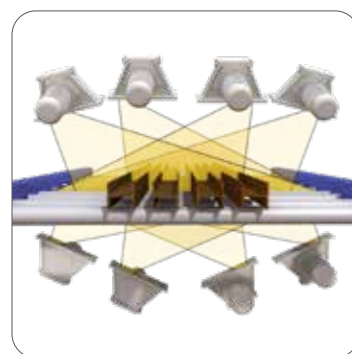
RB HD SERIES

The RB HD range generates the highest performance statistics of this machine type for blasting plates and profiles. The main difference of this machine to others offered in the marketplace is the angled arrangement of the shot blast wheels on the top of the machine. This arrangement reduces the build-up of abrasive on the sections. By using this method a significantly larger percentage of the blasting energy is used on the main task, i.e. de-rusting and scale removal from plates and profiles, and avoids creating mass piles of abrasive.

In practice, the RB HD roller conveyor machine with angled wheels blasts between 5% and 20% faster than a roller conveyor with shot blast wheels that are installed straight. The RB HD roller conveyors are used where higher throughput and longer maintenance intervals are required.

With these features, this machine is particularly useful for integration into fully automatic production lines. The RB HD roller conveyor range can be delivered with widths from 1500 - 3000 mm. All of the machines in this range are suitable for shot blasting plates as well as profiles.

RB HD roller conveyors are principally furnished with the latest version of the TITAN shot blast wheel. There are, of course, many options available for these roller conveyors, such as automatic blast wheel shut off for products that do not cover the full width of the machine, blasting pattern adjustment of the external blast wheels or automatic separation of drilling and sawing chips.





SHOT BLAST WHEEL

The RB-GL is equipped with four Roto-Jet blast wheels offering excellent blasting performance and unbeatable service life due to the main blast components made of hardened tool steel.



SHOT BLAST WHEEL TITAN 5.3 ETA

RB-G & RB-HD lines are equipped with up to eight Roto-Jet TITAN 5.3 ETA blast wheels offering excellent blasting performance and unbeatable service life due to the main blast components made of hardened tool steel.



SHOTBLAST CABINET

The shotblast cabinet is completely manufactured from manganese, an extremely hard material which can deal with shotblasting from 35HRC to more than 50HRC. In the hot spot area, additional 10mm thick manganese plates are installed.



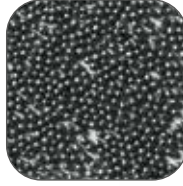
ABRASIVE REMOVAL UNIT

Rotating brushes remove the shot left on the workpiece after the blasting process, which is moved to a rotating screw conveyor to recycle the shot back into circulation.



CARTRIDGE FILTER UNIT

Rust and shot dust generated during the blasting process are addressed by a cartridge filter unit designed in solid steel sheet and mounted on top of the cabinet. The filters clean the cartridges automatically and continuously using an air pressure pulse.



ABRASIVE SHOT BLAST

During its circular movement inside the machine, the blast shot is continuously cleaned of contamination. For a good blasting result, a balanced mix of new and used blast shot is imperative.



LOADING AND UNLOADING

Blasting machines can be integrated into a drilling and sawing line thanks to cross transfers and auxiliary conveyors, to have a fully automatic system.

TECH SPECS

RB G SERIES Shotblasting systems		RB1500G 4/11	RB2000G 6/11	RB2500G 6/11	RB2500G 8/11	RB3000G 6/15	RB3000G 8/15
Machine entrance size [mm]		1600x550	2150x550	2650x550	2650x550	3150x550	3150x550
Wheels [no.]		4	6	6	8	6	8
Installed driving capacity [max. kW]		11	15	18,5	15	18,5	15
Turbines diameter [mm]		380	380	380	380	380	380
Blades width [mm]		65	65	65	65	65	65
Plates width [max. mm]		1500	2000	2500	2500	3000	3000
Beam size [max.]		HEB1000	HEB1000	HEB1000	HEB1000	HEB1000	HEB1000

RB GL SERIES Shotblasting systems		RB1500 4/11	RB HD SERIES Shotblasting systems		RB1500HD 4/18,5	RB2500HD 8/18,5	RB3000HD 8/18,5
Machine entrance size [mm]		1500x800	Machine entrance size [mm]		1600x550	2650x550	3150x550
Wheels [no.]		4	Wheels [no.]		4	8	8
Installed driving capacity [max. kW]		11	Installed driving capacity [max. kW]		18,5	30	30
Turbines diameter [mm]		380	Turbines diameter [mm]		380	380	380
Blades width [mm]		65	Blades width [mm]		65	65	65
Plates width [max. mm]		1500	Plates width [max. mm]		1500	2500	3000
Beam size [max.]		HEB1000	Beam size [max.]		HEB1000	HEB1000	HEB1000

Please review FICEP's sales terms and conditions and machine tolerances as per specific documentation that can be supplied upon request. All the specifications on this catalogue are merely indicative and not binding for the manufacturer. The raw material mentioned on this catalogue are in accordance with the following standards: UNI EN 10025 for technical conditions; UNI ISO 5679 - UNI ISO 5680 - UNI 5397 - UNI 5398 - UNI EN 10024 - UNI EN 10034 - UNI EN 10279 - UNI EN 10056-1 - UNI EN 10056-2 for dimensional tolerances; UNI EN 1090 for pieces execution tolerances.



FICEP S.p.A. - HEADQUARTERS

via Matteotti, 21 - 21045 Gazzada Schianno (VA) ITALY
Tel +39 0332 876111 • Fax +39 0332 462459
email: ficep@ficep.it • www.ficepgroup.com



FICEP France
FICEP Iberica
FICEP UK
FICEP Corporation

FICEP Hong Kong
FICEP Russia
FICEP Middle East
FICEP De

FICEP Austria
FICEP Guangzhou
FICEP Mexico
FICEP Korea Forge Service

FICEP Alger
FICEP Middle East - Dubai Office
FICEP Japan
FICEP India